

HOW TO Build Your Own



Place MESH_PC_MdvIPk_Stn_ModularWall



1



Place
MESH_PC_MdvIPk_Stn_ModularWall_RidgeCap
on top



2



Select both meshes
Rotate 90degrees
Drag til corners meet



3



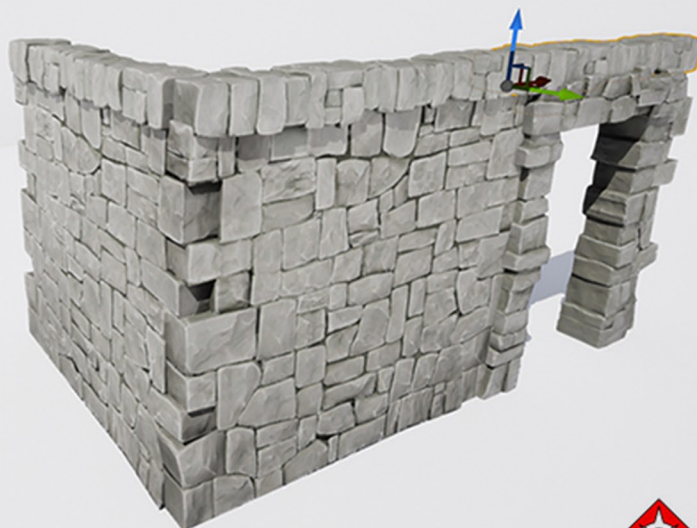
Place MESH_PC_MdvIPk_Stn_ModularWall_Door
Snap it to Wall



4



Place
MESH_PC_MdvIPk_Stn_ModularWall_RidgeCap
on top



5



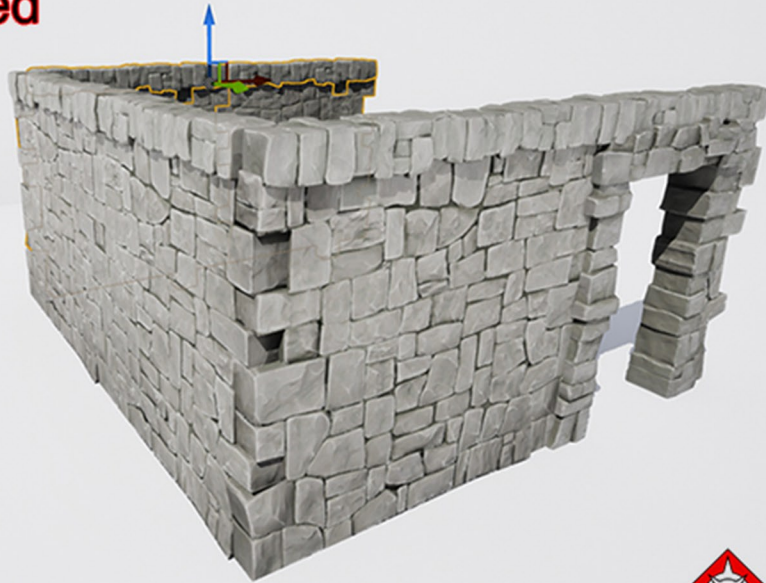
Duplicate Ridgecap and Wall
Drag til aligned



6



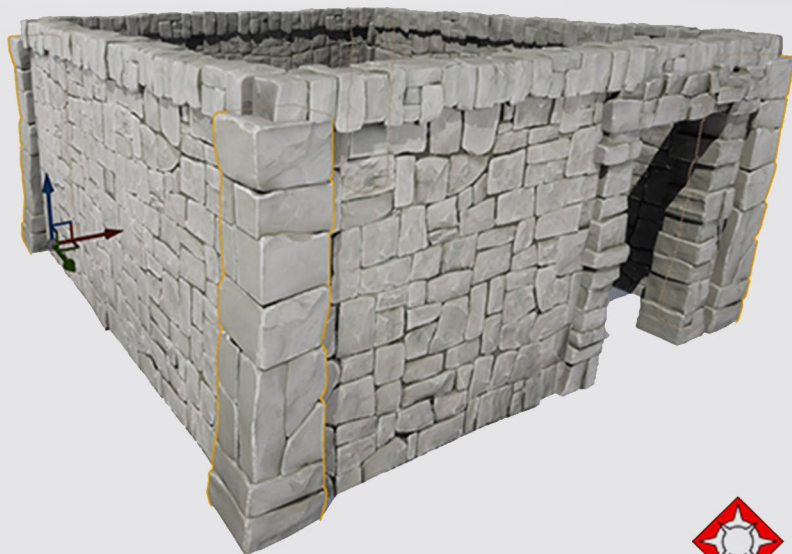
**Duplicate both Wall and Ridgecaps
Rotate 90degrees
Drag til aligned**



7



**Duplicate Walls again and rotate 90degrees
Place MESH_PC_MdvIPk_Stn_Pillar on each
corner**



8



Place MESH_PC_MdvIPk_WdWall
snap to edge of ridgecap



9



Duplicate Wood Wall and rotate til its enclosed



10



Place MESH_PC_MdvIPk_WdPost to each corner
Scale up til you're happy with length

11



Place MESH_PC_MdvIPk_WdPost on top of
previous post then rotate so its laying down.
Scale
Duplicate or place new posts

12





Place MESH_PC_MdvIPk_PlsWll LeftAngle and RightAngle
Position to look like above

13



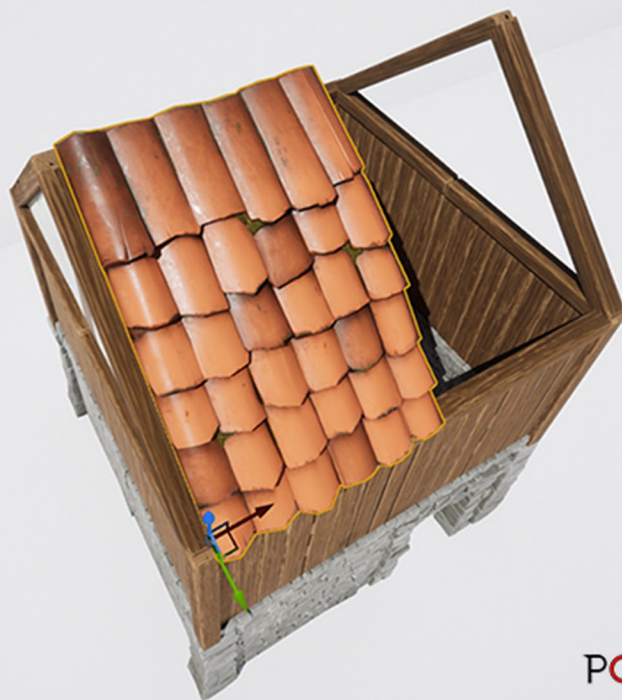
Place Posts on edges of PlsWlls
Scale to length
Duplicate PlsWalls and Posts
Rotate 180 degrees and move to other side of building

14



Place MESH_PC_MdvIPk_RoofTiles_Main

15



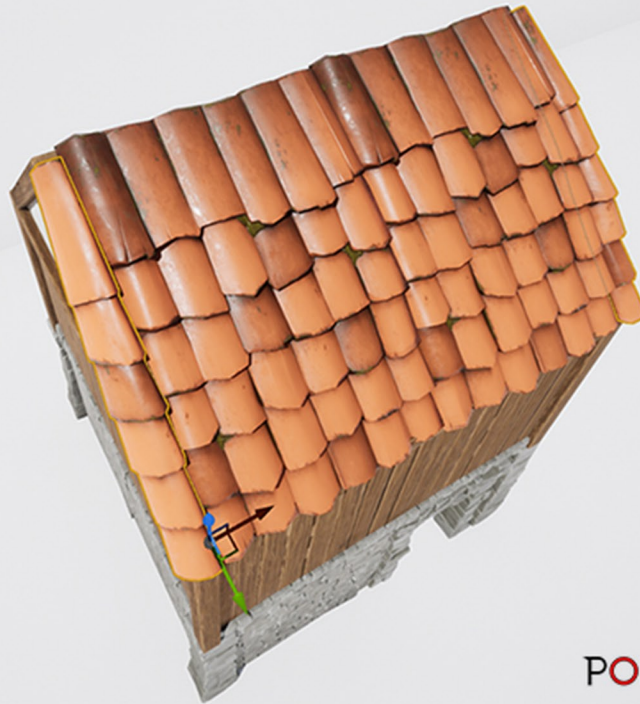
Duplicate MESH_PC_MdvIPk_RoofTiles_Main
Align so it sits along side previous

16



**MESH_PC_MdvIPk_RoofTiles_LeftSide and
RightSide to their appropriate sides**

17

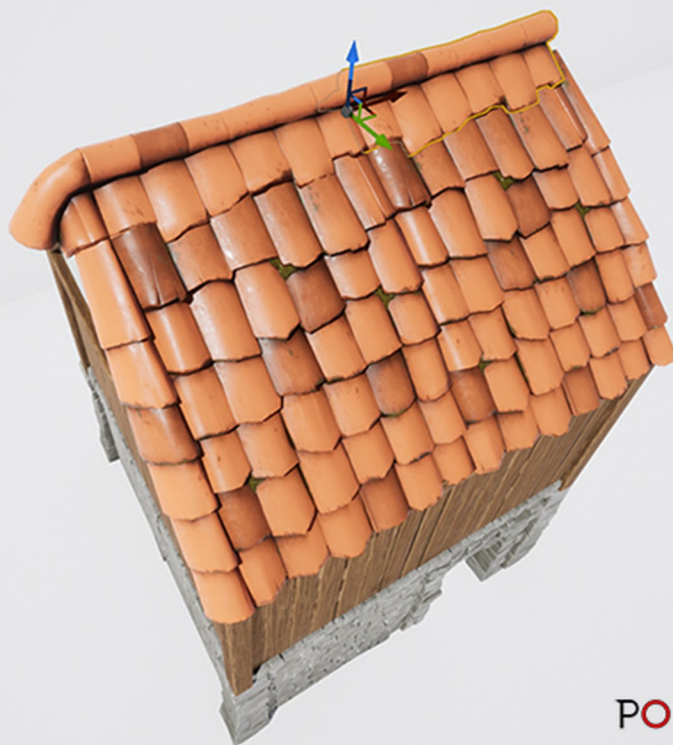


**Place MESH_PC_MdvIPk_RoofTiles_RidgeCap
and MESH_PC_MdvIPk_RoofTiles_LeftCorner
So that left corner sits ontop of the LeftSide**

18



Duplicate MESH_PC_MdvIPk_RoofTiles_RidgeCap
Move til aligned with previous



19



Place MESH_PC_MdvIPk_RoofTiles_RightCorner
So that it aligns with RightSide and Ridgecap

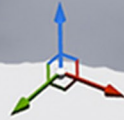


20



Place MESH_PC_MdvIPk_WdDoorFrame
inside the stone door frame

21



Place MESH_PC_MdvIPk_WdDoorSimple inside
DoorFrame

22



Place MESH_PC_MdvIPk_Stn_WindowFrame
on stone wall

23



POINTY CIRCLE

Place MESH_PC_MdvIPk_WoodWindow inside
stone WindowFrame

24



POINTY CIRCLE

Duplicate MESH_PC_MdvIPk_WoodWindow and
align to wood wall
Rotate place as wished

25



Completed House
Hit Ctrl+G to group



26



POINTY CIRCLE

<https://www.pointycircle.com/>

<https://linktr.ee/PointyCircle>

